

Quick Start Guide

Network Video CMS

V1.0

1. How to install an IP camera?

When this series of products need to be installed on wall, here are the steps:

- If against cement ceiling or wall, we need install expansion screws first (expansion screws' hole position must fit the brackets), then we can install brackets.
 - If against wooden ceiling or wall, please use tapping screws to install it.
1. Fix bracket: Install camera bracket against wall.
 2. Install camera: Fix camera and bracket with screws, then adjust camera's angle, the final step is to tight the screws at the bracket to make sure they are combined tightly.
 3. Adjust images: After observes the image on screen, use zoom controller to settle the right field of view, use focus controller to make the image clear.

 NOTE: Zoom and Focus controller all at the camera's bottom.

2. Installation

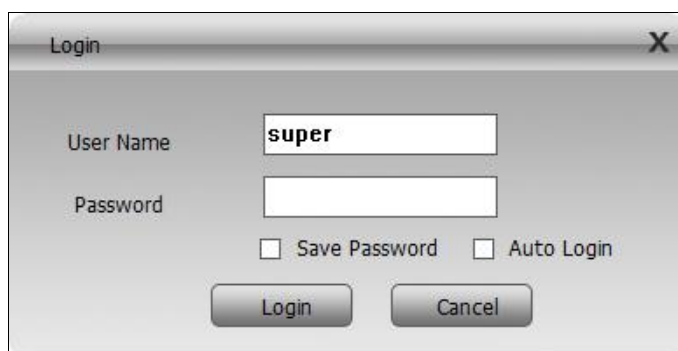
Click **GTS_CMS_*.exe** to install, select language, click **Next** to continue (the default disk is C, user is able to change it) until all steps are finished.

3. Network Connection

 NOTE: Make sure IP camera and computer's IP address are in the same network segment.

The default IP of device is **192.168.1.10**, if the IP address is in wrong network section, please use search tool (**General_DeviceManage**) from CD to change it.

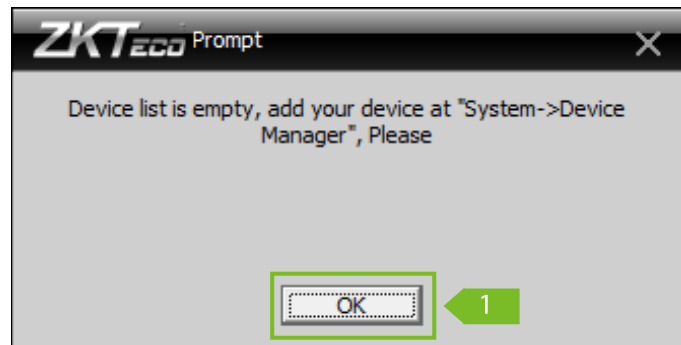
4. Login



Enter username and password

User name is "admin" as default, there is no password yet.

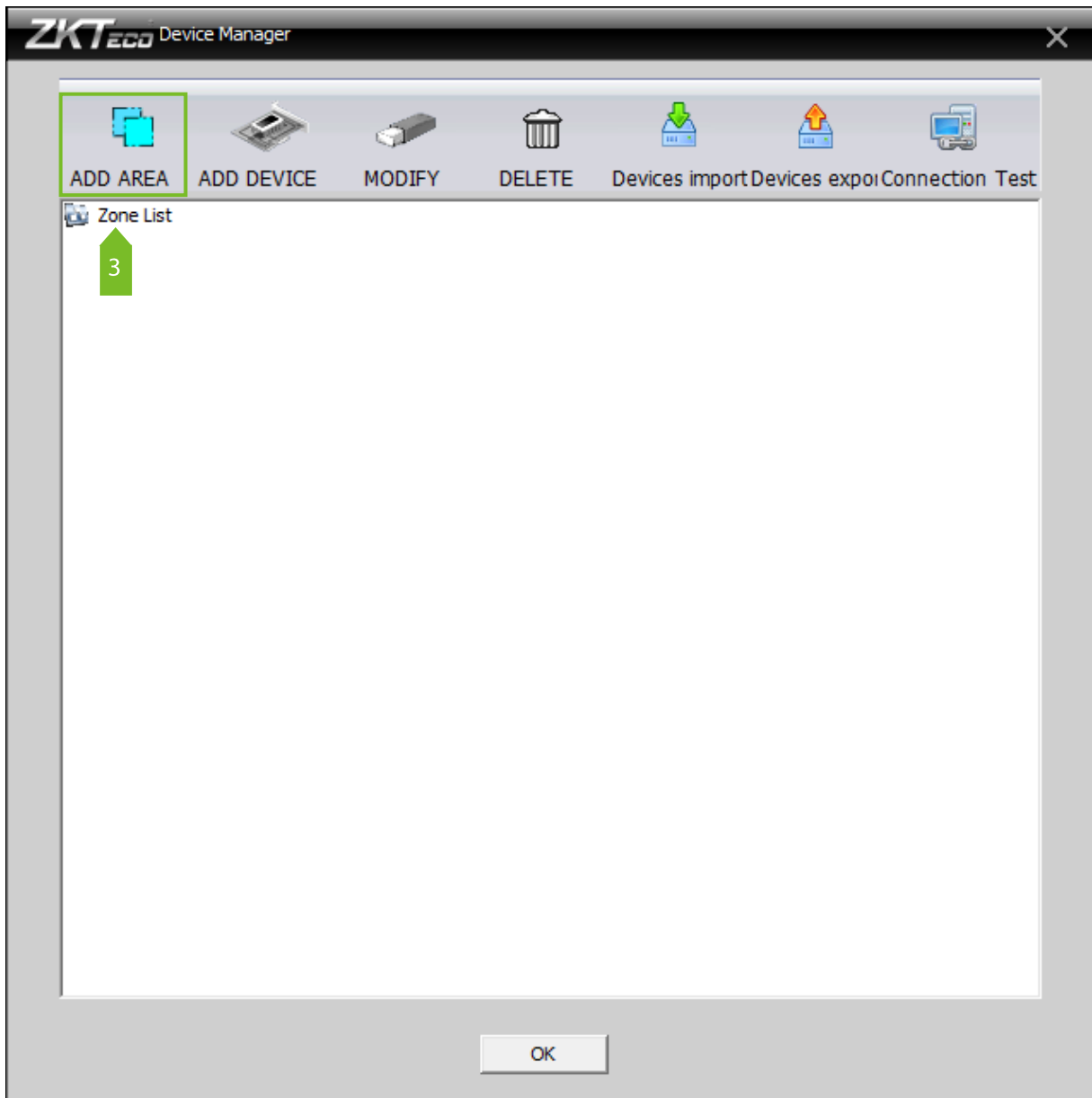
5. Add an IP Camera



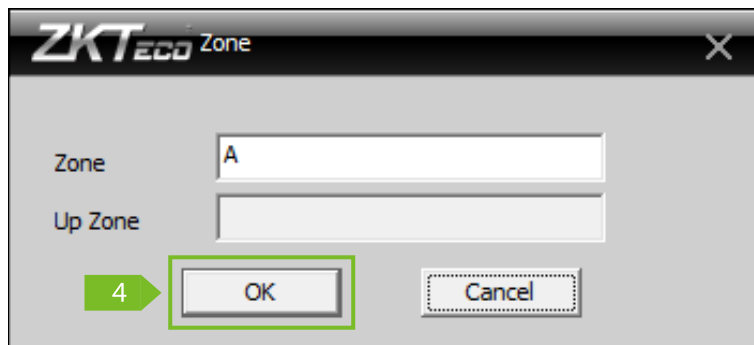
1. A dialog box will be pop-up when there is no device in the CMS device list, click **OK** to add a device.




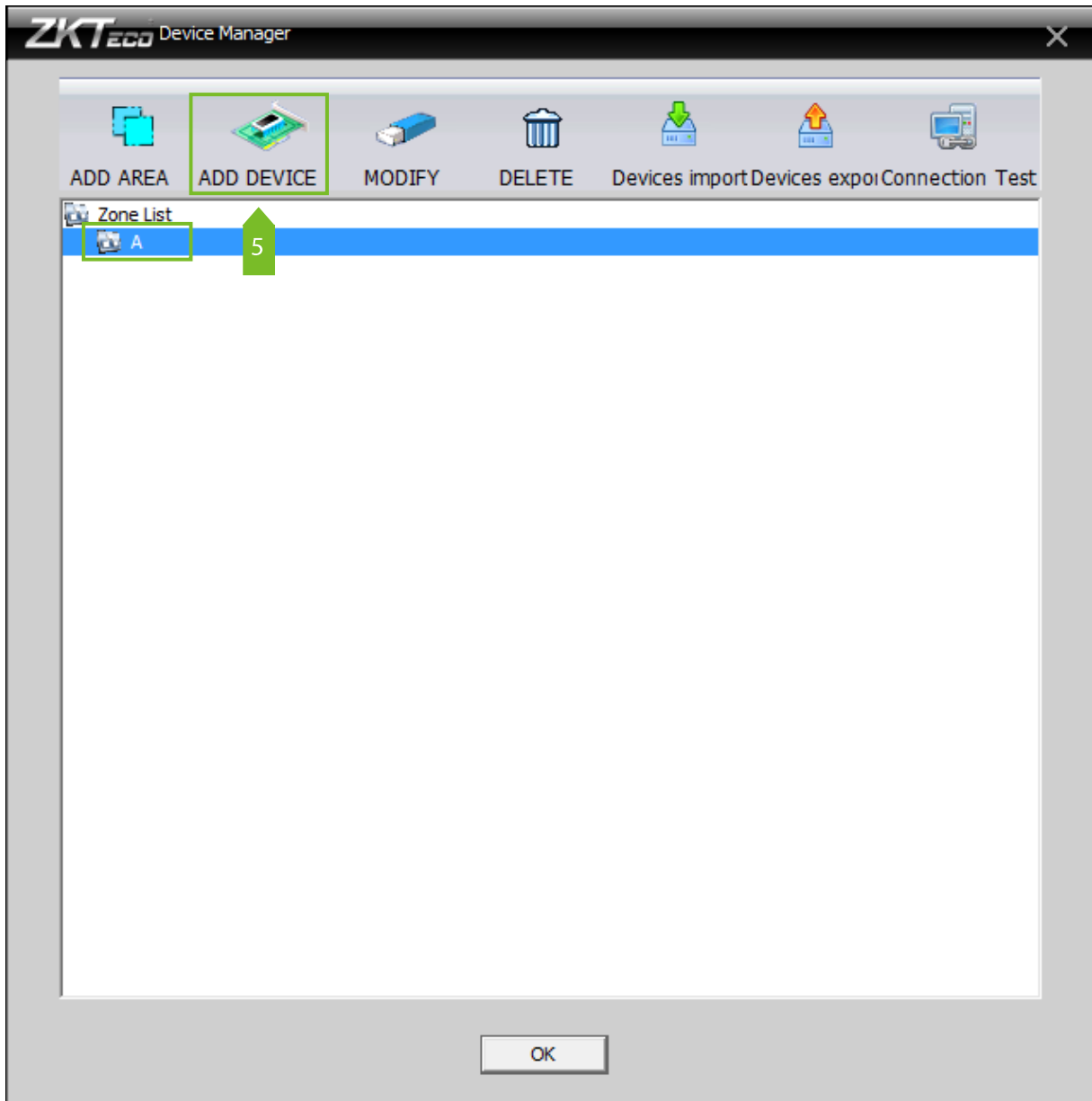
2. Click **System** > **Device Manager** to show **Device Manager** interface.



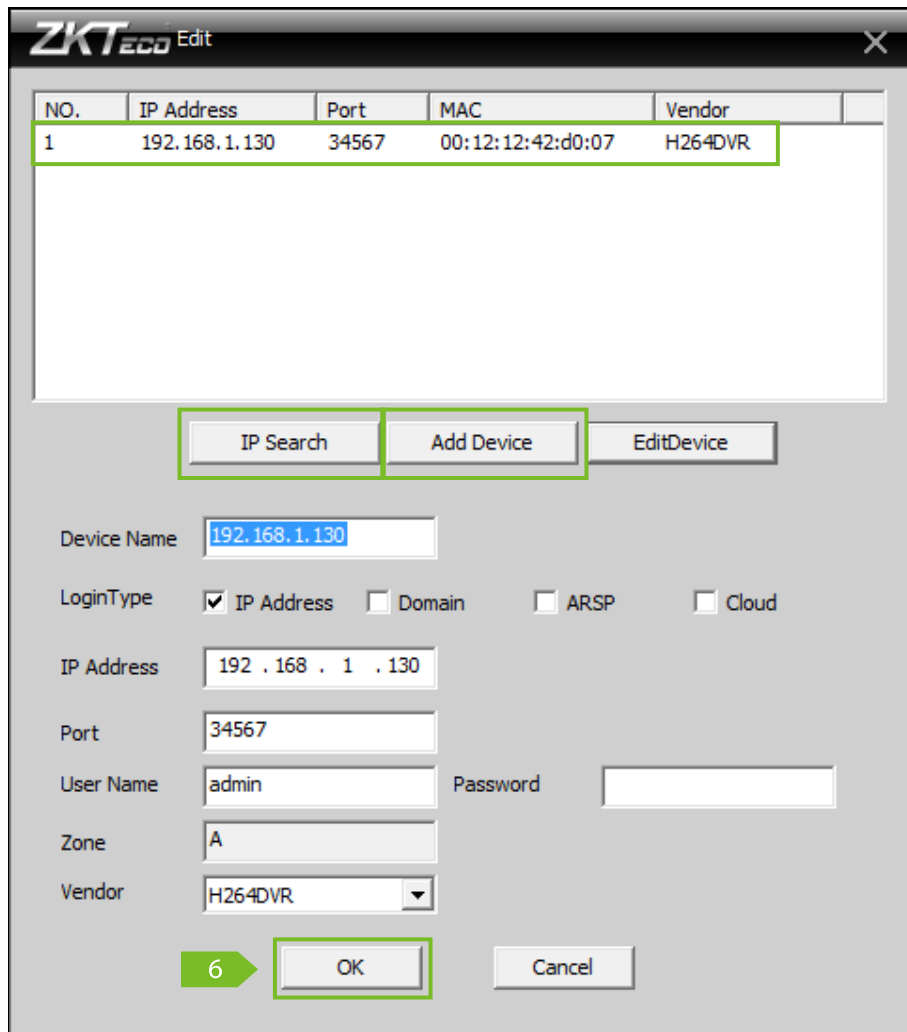
3. Click  to add a zone.



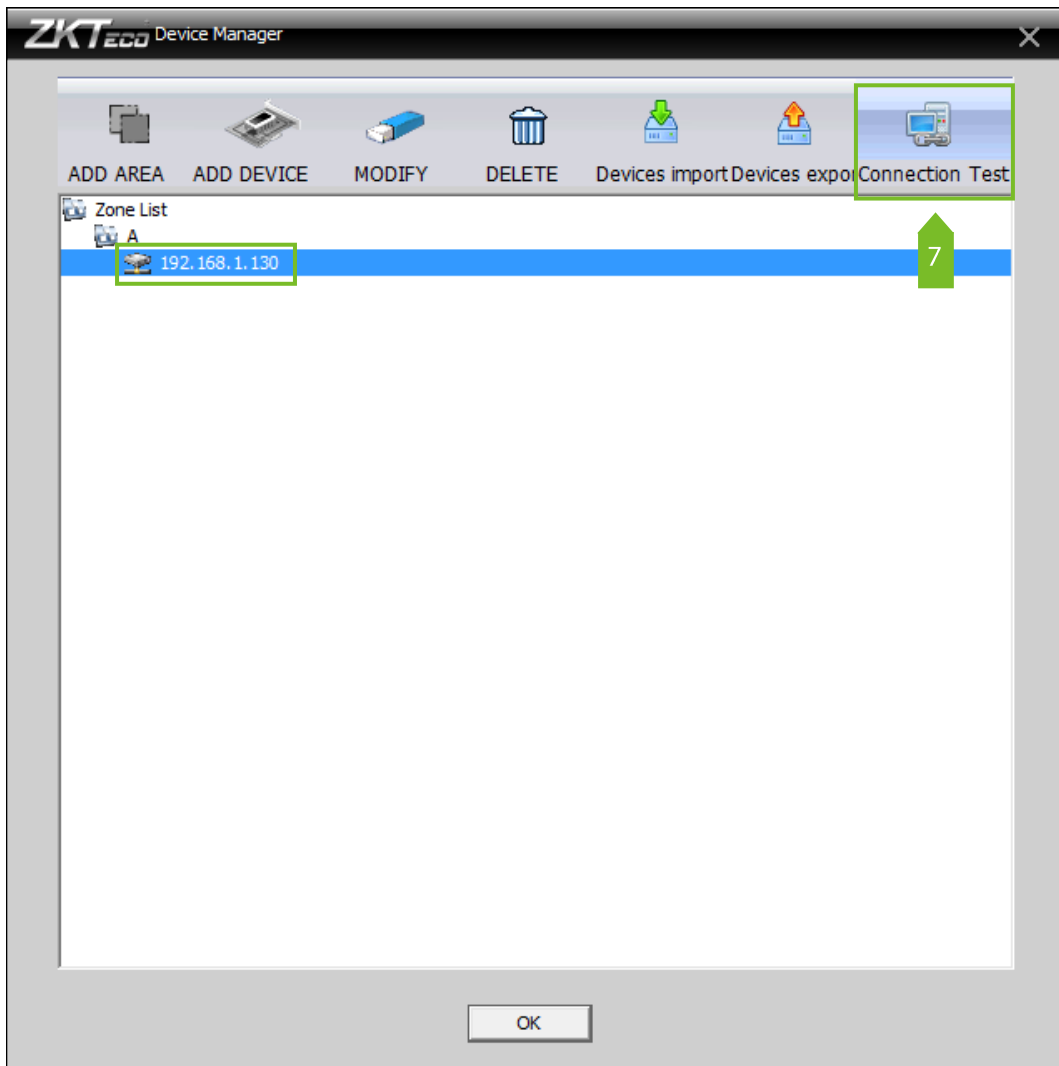
4. Click  to complete adding, and added zone will appear in Zone List.



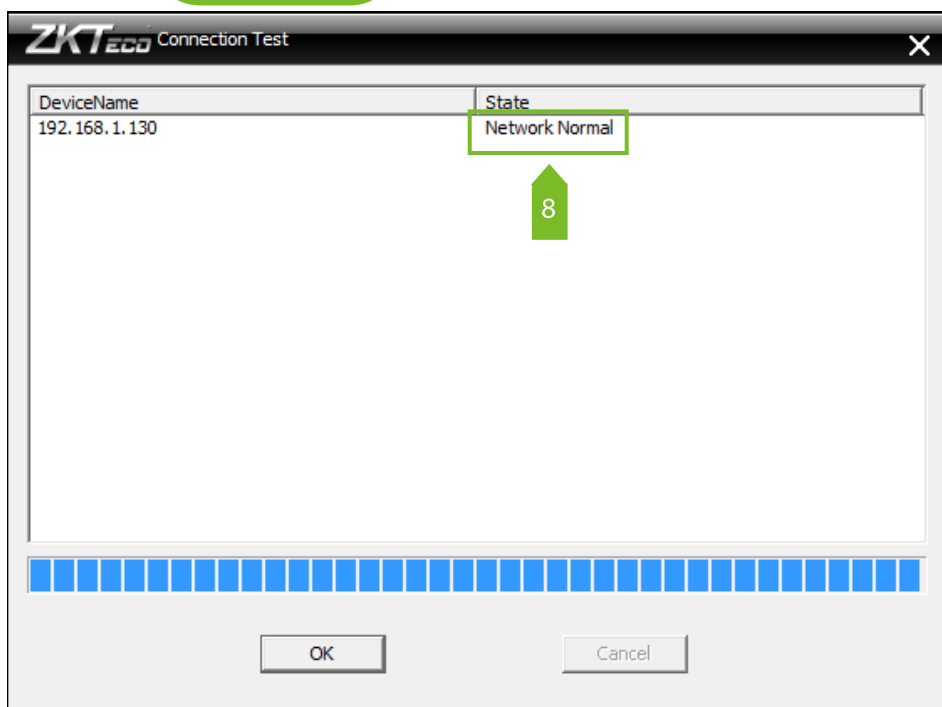
5. Select zone name **A** , and click **Add Device** to show the device edit interface.



- Click **IP Search** to search devices, after devices are selected, click **Add Device** , and then **OK** to confirm, and the added device will appear in Device List.



7. Select the device, and click **Connection Test** to test whether the device is connected.



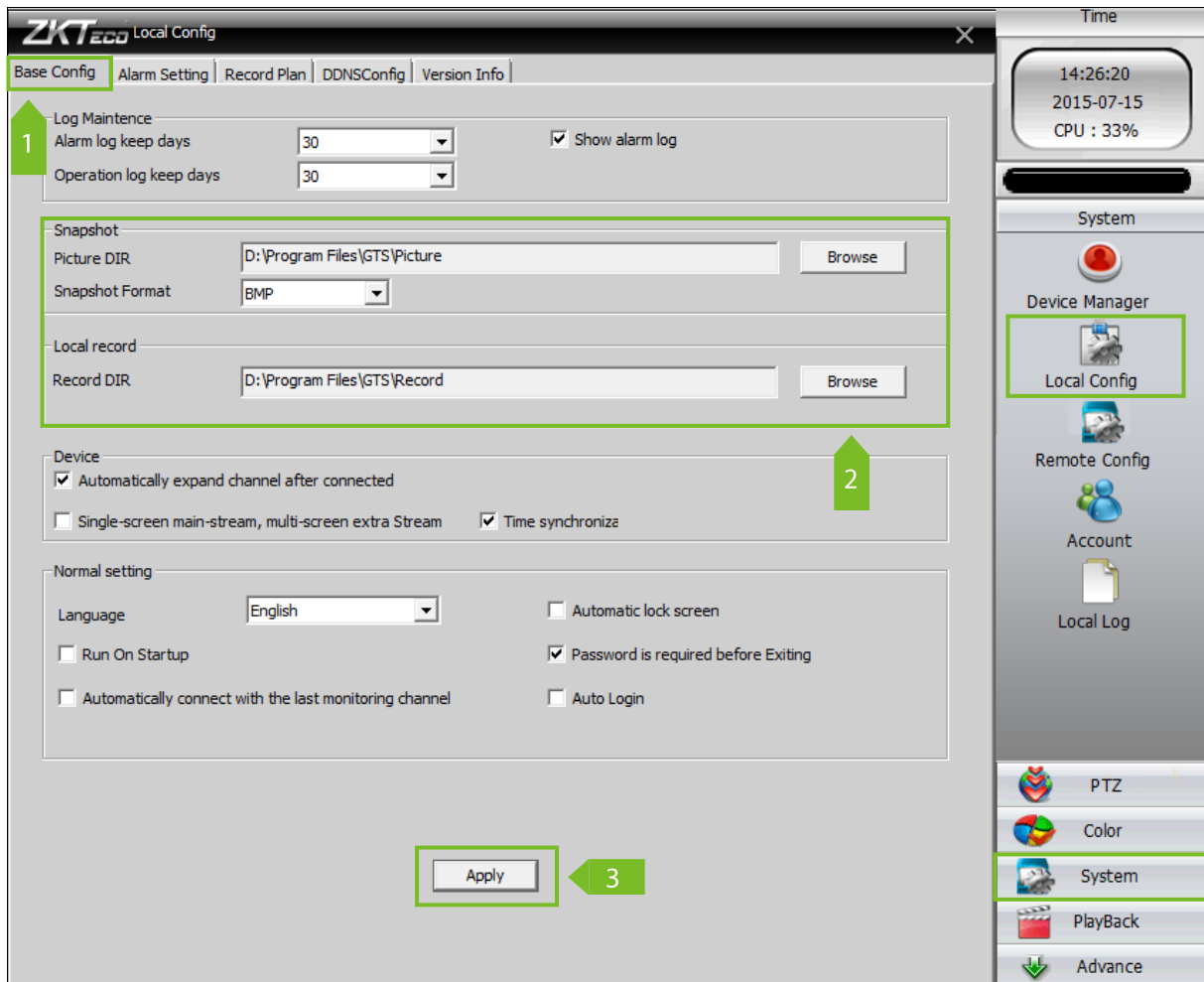
8. The picture above shows that the device is connected successfully.

6. Main Interface



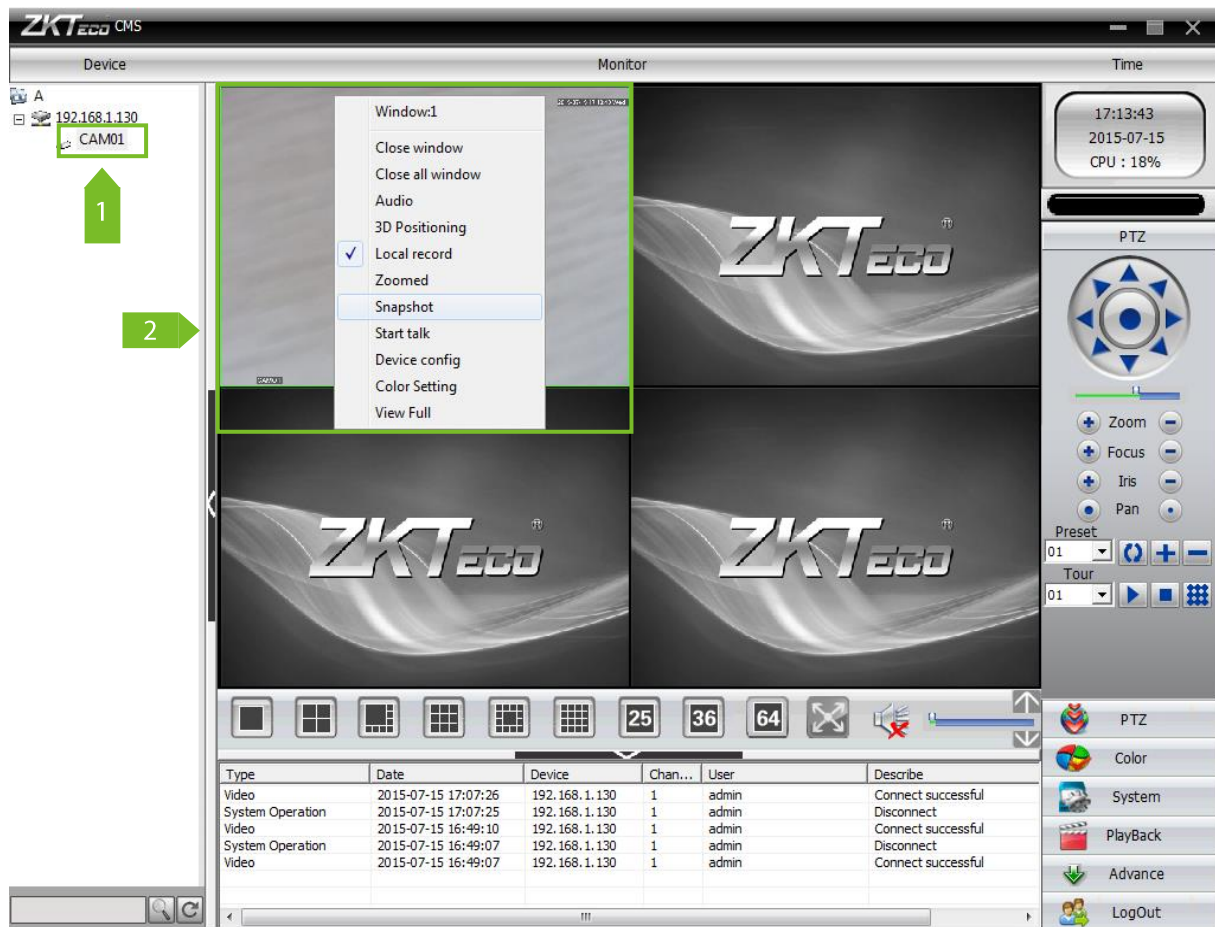
1	Device List	5	PTZ (Pan / Tilt / Zoom)
2	Preview Images and Operation	6	Main Menu
3	Time Display	7	Display Mode and Audio
4	Disk Status	8	Operation Log

7.Set the Path of Snapshot / Local Record



1. Click **System** > **Local Config** > **Base Config** to show the configuration interface
2. Click **Browse** to change the saving path of snapshot / local record.
3. Click **Apply** to finish the configuration.

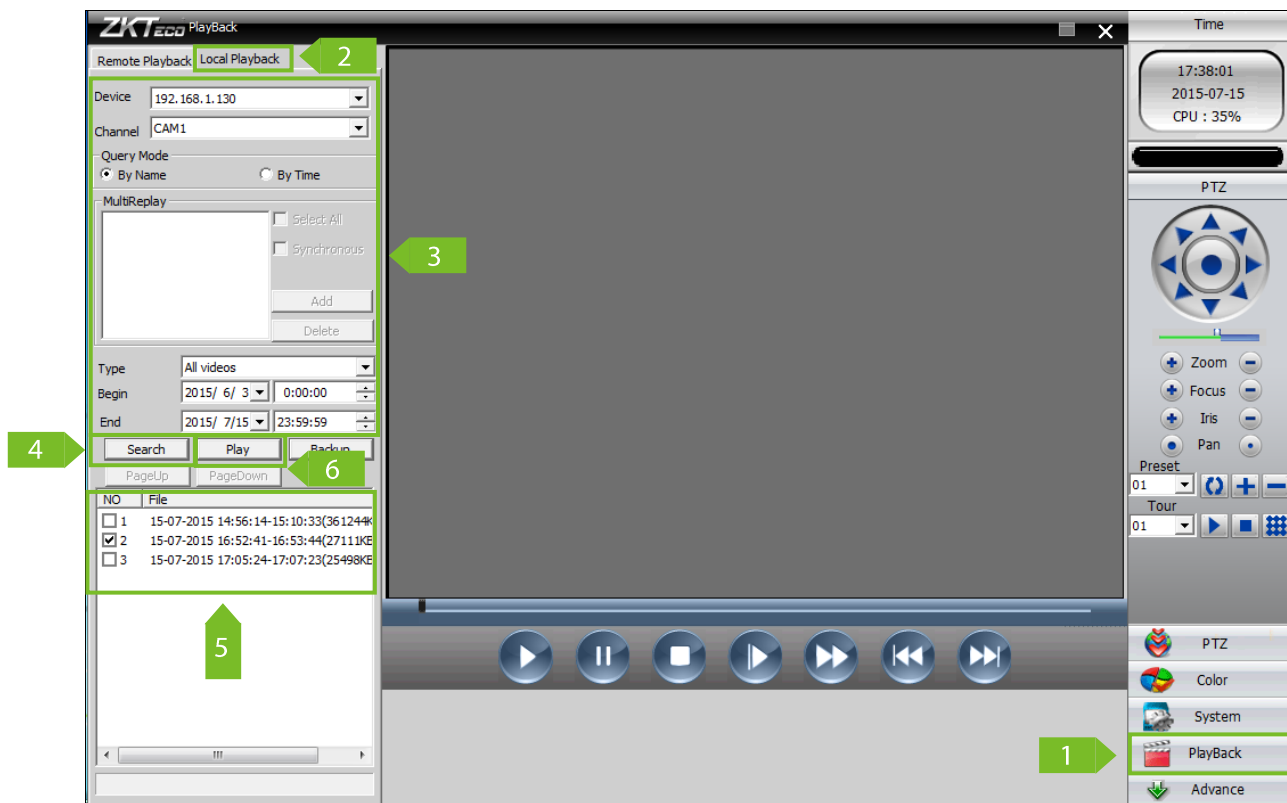
8. Record/Snapshot Manually



1. Double click the channel **CAM01** , and you can preview the image on the window.
2. Right click the screen and check **Local Record** to start recording or uncheck **Local Record** to stop recording, and the record will be stored into the disk which you set.

 NOTE: In step2, you can check **Snapshot** to capture a picture, and the picture will be stored into the disk.

9. Local Playback



1. Click **Playback** to show the playback interface.
2. Select **Local Playback**.
3. Select **Device Name**, **Channel Name**, choose **Query Mode**, select video type and time interval.
4. Click **Search**.
5. Select a video.
6. Click **Play**, and the video will be played on the selected window.

ZK Building, Wuhe Road, Gangtou, Bantian, Buji Town,
Longgang District, Shenzhen China 518129
Tel: +86 755-89602345
Fax: +86 755-89602394
www.zkteco.com

